

# INCLINATOR® ELEVETTE® | HOME ELEVATORS

*From simple accessibility to distinctive elegance.*



**INCLINATOR**  
COMPANY OF AMERICA

\*Image pictured does not show gate or interlock.

## Inclinator's origin of caring is our guiding principle today.

C.C. Crispen Motor Car Company was a successful Cadillac dealership (Pennsylvania's first) in 1923 when Mr. Crispen, an inventive entrepreneur, got an idea for a moveable seat traveling up and down stairs while he was visiting a convalescing neighbor confined to an upstairs bed. Within a few days, he formalized his idea and began U.S. Patent procedures. A self-taught mechanical engineer, Crispen developed a folding wooden chair and footrest that moved on rollers up and down a steel rail fastened to stairs using a home's electricity to operate the motor. It was narrow enough that people could still use the stairs by foot. He called it the "Inclin-ator" to convey the thought of an elevator working on an incline of stairs.



In 1924, the Philadelphia Electric Company invited Mr. Crispen to display the Inclin-ator in its showroom ... helping his idea become a company. Soon after, Westinghouse Electric saw the unique product and had one installed at its Electric Home on Atlantic City's Boardwalk.



In 1928, Mr. Crispen designed the first residential electric elevator as an alternative for homes with winding staircases. He named it "Elevette." Inclinator later added vertical platform wheelchair lifts and dumbwaiters to its product line.

Even after 95 years, Inclinator remains a family-owned business. All of our elevators are crafted in our South Central Pennsylvania, USA shop and shipped to your dealer for installation.

## For generations, Inclinator has been helping families improve their quality of life.

Not having to walk stairs makes living in your home easier. It gives people in wheelchairs, those needing walkers or people just having difficulty climbing stairs the ease of accessing every floor of their house ... giving them more years in the home they love ... with the people they love.







**Inclinator elevator designed and built to match  
the home's custom cabinetry style and finish.**

(custom cab shown)



Cab Style 200



Cab Style 250



Cab Style 300  
(Shown with optional second gate)

- **Reliable Performance**
- **Near Endless Design Possibilities**
- **Best Name In The Industry**

## **Elevette<sup>®</sup> Home Elevators** *Beautifully designed and masterfully engineered.*



Cab Style 500

Homeowners appreciate Inclinator Elevette's beauty and reliable performance. Architects love the near endless design possibilities. Every Inclinator product is skillfully hand-made and finished one-at-a-time, making customization possible. Inclinator is the best name in the industry because we build the best home elevator and back it with valuable technical support and exceptional customer service.

**Add to an existing home or include in new construction.**



# Elevator Cab Components



LED ceiling lights, or add your own lights



Cab Operating Panel, inside cab and Hall Station at each landing's door



Optional flush mount phone



Wood or metal handrail



Accordion or scissor gates available



Many wood species or laminate choices for walls, floor, ceiling and accessory elements

Cab Style 400  
Raised panel

# Beautiful Cab Styles

## With the Best Fit and Finish In the Industry

### Choose a standard model or design a one-of-a-kind elevator.

Inclinator's Elevette® is available in six cab styles, three drive systems, many door configurations and the most custom features and accessory options. Elevette can be placed in an interior or exterior elevator shaft.

**Elevette has more standard features and custom options than any other home elevator brand.**

### Standard Features

- 100 Cab
- Accordion Gate (vinyl)
- Wooden Handrail
- Two (2) LED Lights
- Cab Operating Panel
- Hall Stations
- Cab Height – Up to 96" inside
- Up to 15 sq. ft. Cab Size

### Custom Features

- Telephone
- Upgraded Cab Styles
- Upgraded Hand Rail
- Upgraded Accordion Gates
  - Hardwood
  - Acrylic
  - Aluminum
- Scissor Gates
- Custom Finish for Cab
- Hardwood Floor
- Non-skid Laminate Floor
- Over 50" Cab Width
- Water Resistant Hall Station
- Up to four (4) LED Lights
- Acrylic Cab Window/ Dome
- Auto Gate Opener
- Auto Door Opener



### 500 Cab

Powder-coated extruded aluminum frame with acrylic panels that provide a panoramic view. Frame available in silver, white, or black.



### 250 Cab

Shaker style with solid wood frame and veneer inserts. Shown with oil rubbed bronze scissor gate.



#### **400 Cab**

Solid wood with hardwood veneer raised or recessed panels. This cab complements a traditional home style.



#### **300 Cab**

Smooth hardwood veneer panels with crown, chair, baseboard, and picture molding.



#### **200 Cab**

Smooth hardwood veneer panels with flush corners make this style ideal for more contemporary designs.



#### **100 Cab**

Paintable MDF panels with plywood core. White laminate ceiling. Shown with clear aluminum scissor gate



# Cab Finishes

## Walls and Ceiling

The following wood species are available for our 200, 250, 300 and 400 Cabs. Many other wood species can be special ordered upon request. White laminate available for ceilings only. Acrylic ceilings are also available.



Available in satin, semi-gloss, clearcoat or virtually any custom paint or stain.



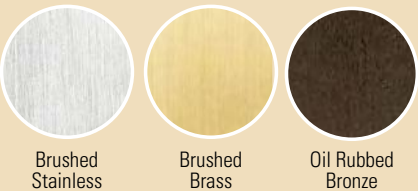
## Flooring

The following floor options are available.



## Handrail

One flat wood handrail, finished to match walls, is standard. Optional round metal handrail is available in one of these finishes



**Standard:** Flat Wood Handrail



**Optional:** Round Metal Handrail



# Electrical Components

All Inclinator home elevators come standard with an easy-to-use Cab Operating Panel in the cab itself and Hall Stations for each landing. Choose flush or raised styles in three distinctive finishes. Emergency light and bell are standard, as is a digital landing position indicator, an overrun switch and our call/send feature. Key locks are optional.

## Cab Operating Panels



### Flush

1-4 Landings: 4 1/8 x 20 1/4"  
5-6 Landings: 4 1/8 x 24 3/4"



### Raised

1-4 Landings: 4 3/4 x 21"  
5-6 Landings: 4 3/4 x 24 3/4"

## Hall Stations



### Flush

4 1/8 x 9 7/8"



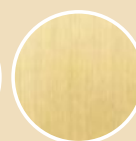
### Raised

3 1/2 x 8 1/4"

## Available Finishes



Brushed  
Stainless



Brushed  
Brass



Oil Rubbed  
Bronze



## Optional Phone

We offer a flushed mount speaker phone.  
An analog telephone line is required.

4 1/8 x 9 7/8"

## Exterior - Water Resistant Hall Stations

Available in brushed stainless only



Closed with Hinged Cover

## Lights

Up to four LED lights available (2 standard) which also serve as emergency lighting. Or supply your own lighting to match your home decor. For homeowner supplied lights, an emergency light is provided.



White



White & Painted Bronze

3 1/2" Diameter Recessed Down Light with Three  
1-Watt High-Power LEDs with Pivoting Center

# Elevator Gates and Operators

## Accordion Style Gates

Available in vinyl, hardwood, acrylic and aluminum panels.



### Vinyl



### Hardwood



### Aluminum



### Acrylic Panels

#### Clear Acrylic



#### Tinted Acrylic



Bronze Sidestrips    Clear/Silver Sidestrips    White Sidestrips    Sand Sidestrips    Gold Sidestrips

## Scissor Style Gates

Available in oil rubbed bronze or clear aluminum.



Oil Rubbed Bronze



Clear/Silver

## Automatic Gate Operators



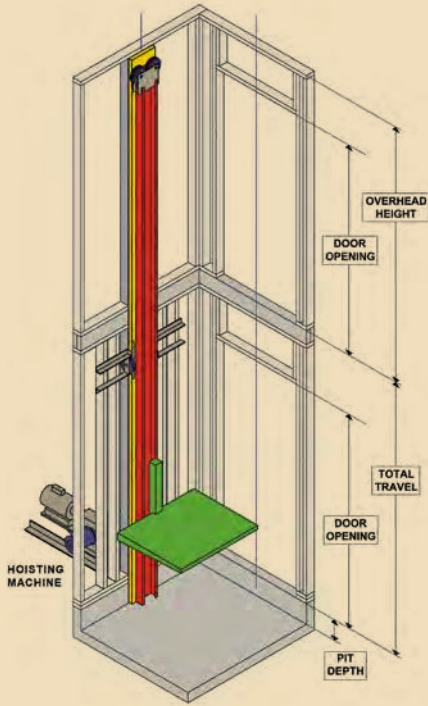
Available with accordion style gates only

## Automatic Door Operators

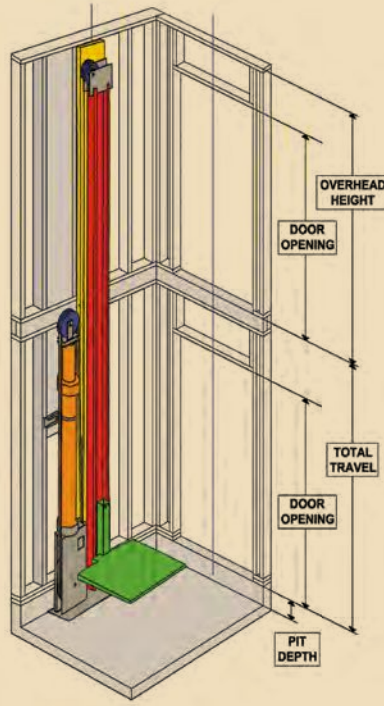


Available in silver, dark brown, and ivory white

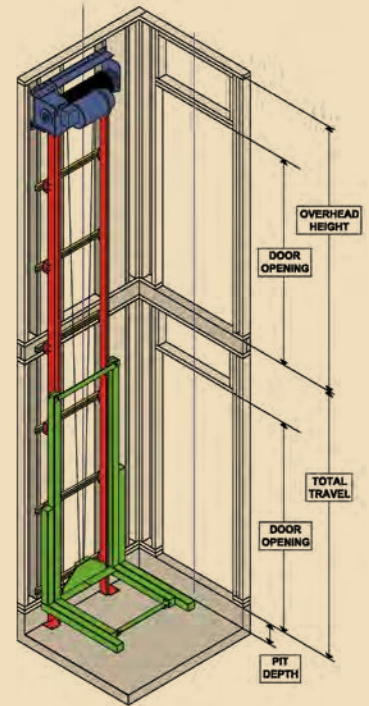
# Inclinor Elevette Drive Systems



Cable Drum



Hydraulic



MRL Overhead Cable Drum

## Elevette® Cable Drum

## Elevette® Hydraulic

## Elevette® MRL Overhead Cable Drum

Maximum Capacity	500/1000#	1000#	1000#
Maximum Platform size	12 sq. ft./ 15 sq. ft.	15 sq. ft.	15 sq. ft.
Maximum Travel Distance	50 ft.	50 ft.	40 ft.
Pit Depth (min)	6 in./10 in.	10 in.	8 in.
Overhead Height (min)	Inside Cab Height + 16 in.	Inside Cab Height + 16 in.	Inside Cab Height + 25 in. (40 fpm) Inside Cab Height + 22 in. (30 fpm)
Maximum landings	6	6	6
Microprocessor Control System	✓	✓	✓
Used with ALL Cab styles	✓	✓	✓
Travel Speed - up to 40 fpm	✓	✓	✓
Call/Send Feature	✓	✓	✓
Emergency Lighting	✓	✓	✓
Emergency Battery Lowering	✓	✓	✓
Small Space Design	✓	✓	-
Seperate Machine Room Req'd	✓	✓	-



**You can be confident in choosing an Inclinator product.**



#### **Home Elevators**

From simple accessibility to distinctive elegance, Elevette® has the most standard features and custom options. America's #1 brand.



#### **Vertical Platform Lifts**

The Inclinator Serenity wheelchair lift is the choice of homeowners throughout North America, offering easy access into and out of your home.



#### **Commercial and Residential Dumbwaiters**

Move heavy or bulky items effortlessly with a commercial or residential dumbwaiter from Inclinator.

## **Best Name in the Industry**

*Engineered for Reliability / Handcrafted Elevator Cabs / Robust Control System*

**Call us to locate your nearest dealer, or go to our website – [www.inclinator.com](http://www.inclinator.com) – and click on “Find A Dealer.”**



Consult your local building authorities for specific regulations on these products before purchasing. Specifications, material finishes and product options are subject to change without notice.



601 Gibson Boulevard, Harrisburg, PA 17104 USA  
[info@inclinator.com](mailto:info@inclinator.com)  
**Toll-Free in USA: 855-786-5600**  
**[www.inclinator.com](http://www.inclinator.com)**

©2019, Inclinator Company of America | All Rights Reserved | INCMK60103 | SPCTM-5M-115 | Rev. 01-19